

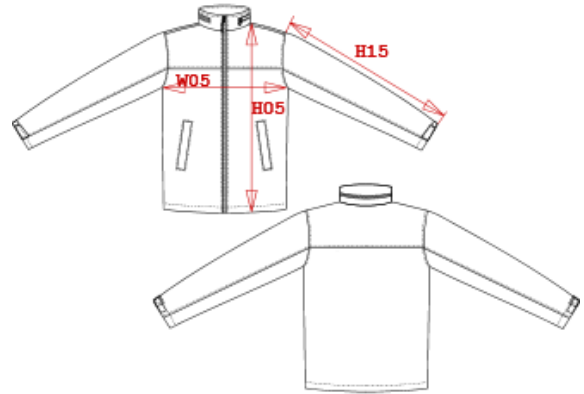
KARIBAN

REFERENCE : K654

SIZES : S_M_L_XL_XXL_3XL_4XL

COMPOSITION :

Main fabric : Nylon 210T AC coating - 70 100%polyamide
 Main fabric : Nylon 210T milky coating - 70 100%polyamide
 Lining 1 : Polar fleece 200 For body lining 100%polyester
 Lining : Lining 210T For sleeve 100%polyester
 Wad 1 : Polyfil 80 For sleeve lining 100%polyester



WEIGHT :

Main fabric : 70 gsm
 Main fabric : 70 gsm
 Lining 1 : 200 gsm
 Lining : 60 gsm
 Wad 1 : 80 gsm

FABRIC CONSTRUCTION AND FINISHING :

Acrylic coating

ARTICLE WEIGHT :

720 gr/pc

DESCRIPTION	
Français :	Veste doublée polaire
English :	Fleece lined jacket
Nederlands :	Jacke mit fleece Futter
Deutsch :	Fleece gefütterte Jacke
Español :	Chaqueta de forro polar
Italiano :	Giacca foderata in pile
Português :	Blusão com forro polar

COLORS	PANTONE SERIGRAPHIE
Black	Black
Navy	296C
Red	200C
Dark grey	432C

MEASUREMENT							
Description	S	M	L	XL	2XL	3XL	4XL
H05 Hauteur totale / Total height	75,65	77,65	79,65	82,40	85,20	87,90	90,65
W05 1/2 largeur poitrine / 1/2 chest width	58	61	64	68	72	76	80
H15 Longueur manche / Sleeve length	61	63	65	67,20	69,40	71,60	73,80

CARE LABEL				

PACKING	
Box	25 pcs / box S => L:61cm W:43cm H:44cm GW:14.00kg NW:12.00kg M => L:61cm W:43cm H:44cm GW:14.50kg NW:12.50kg L => L:61cm W:43cm H:44cm GW:15.00kg NW:13.00kg XL => L:69cm W:46cm H:54cm GW:16.10kg NW:14.50kg XXL => L:69cm W:46cm H:54cm GW:16.20kg NW:14.60kg 3XL => L:71cm W:48cm H:54cm GW:17.10kg NW:15.30kg 4XL => L:74cm W:48cm H:54cm GW:17.50kg NW:16.00kg